



HomeVoice™ 2.3

Upgrade

Instructions

Release Candidate 1

April 13, 2002

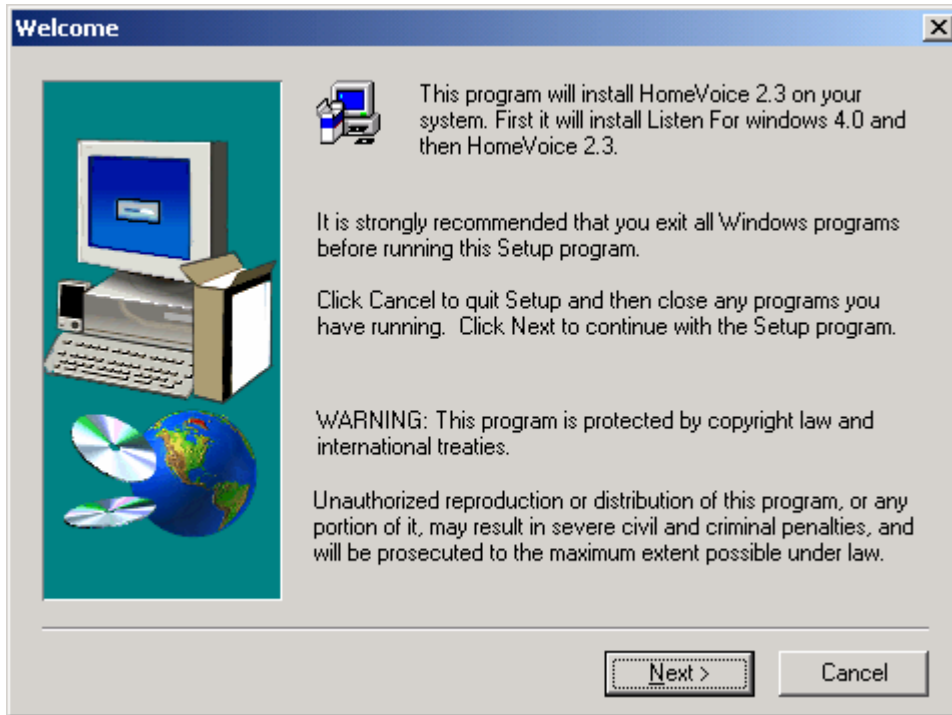


These Instructions are for the HomeVoice™ Version 2.3 Upgrade found on the Applied Future Technologies, Inc. web site at

<http://www.appliedfuture.com/downloads/HomeVoice23Upgrade.exe>.

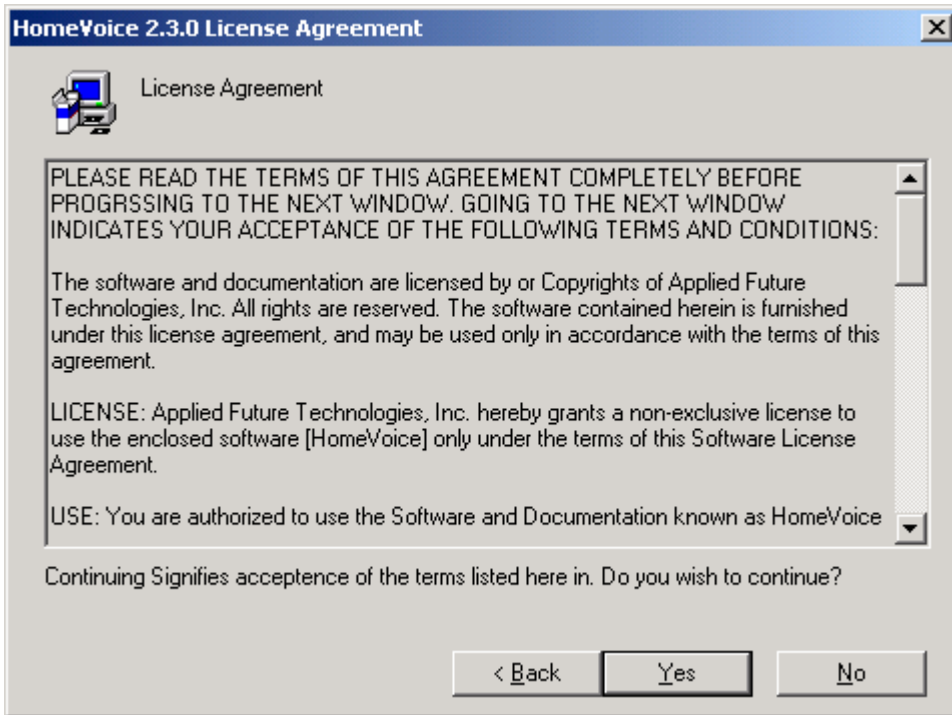
This upgrade requires version 2.1 to be installed on your system.

Download the above file to your system and run it. You will see the following dialog.

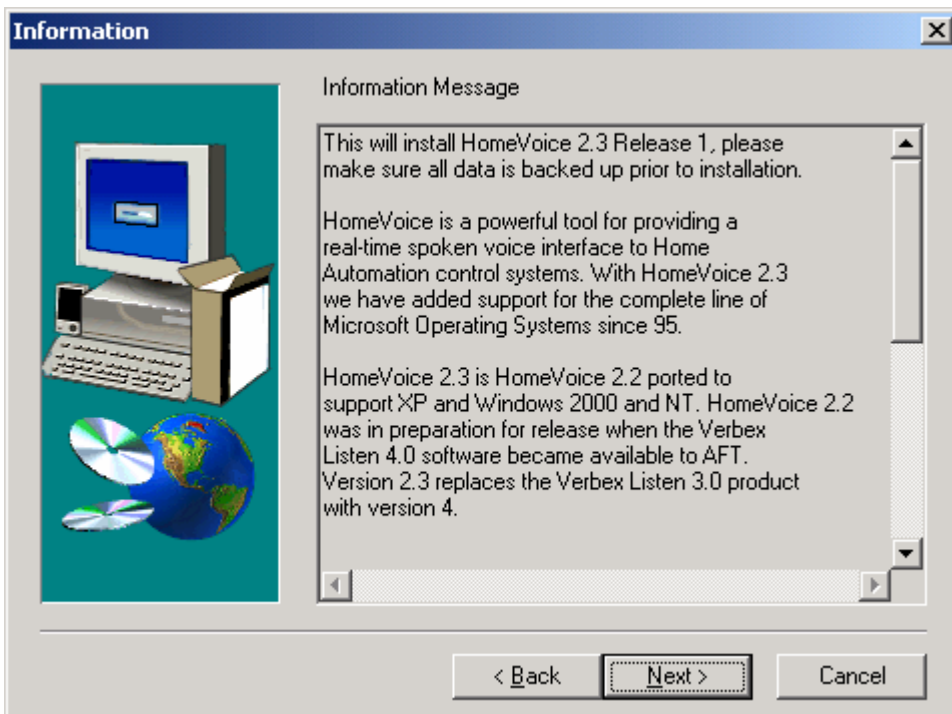


Click the Next> button to continue to the next dialog which is a follows.

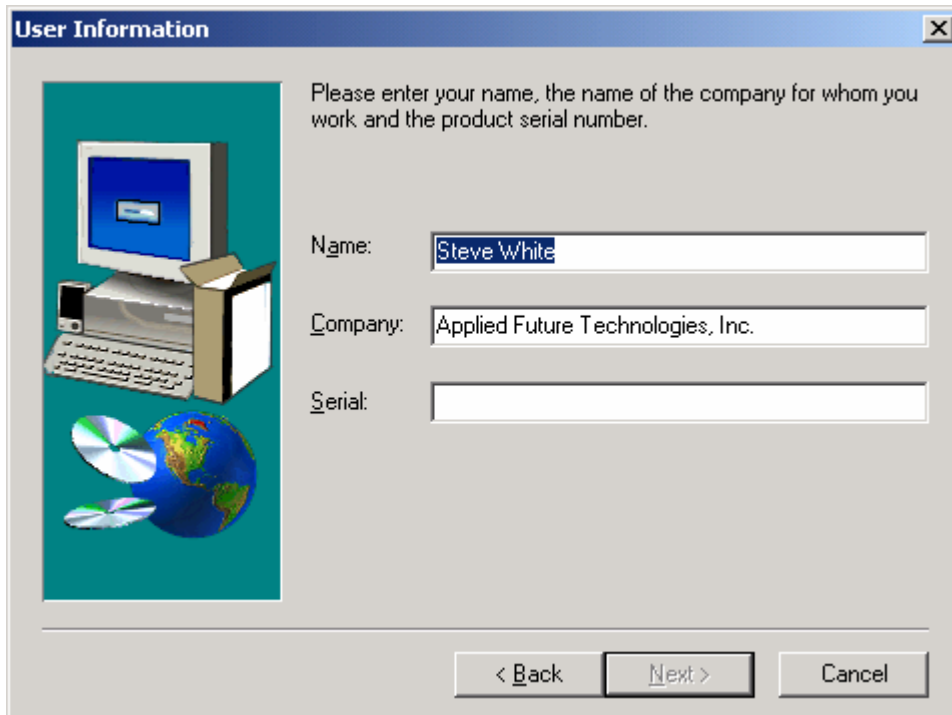




Read the license agreement and if you agree click the Yes button if not click the No button and the installation will terminate. You will be presented with the following dialog displaying information regarding the new release of HomeVoice™ 2.3.

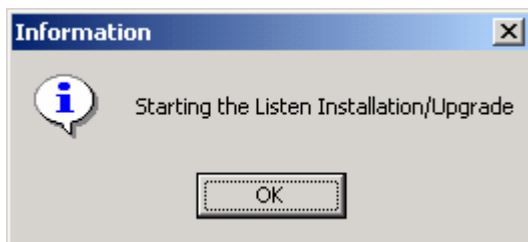


Read over the information presented and then click the Next> button to continue. If this is the first upgrade from version 2.1 please input your version 2.1 license key.



The 'User Information' dialog box contains a graphic on the left showing a computer monitor, keyboard, mouse, and CD-ROMs. The main text reads: 'Please enter your name, the name of the company for whom you work and the product serial number.' There are three input fields: 'Name' with 'Steve White', 'Company' with 'Applied Future Technologies, Inc.', and 'Serial' which is empty. At the bottom are buttons for '< Back', 'Next >', and 'Cancel'.

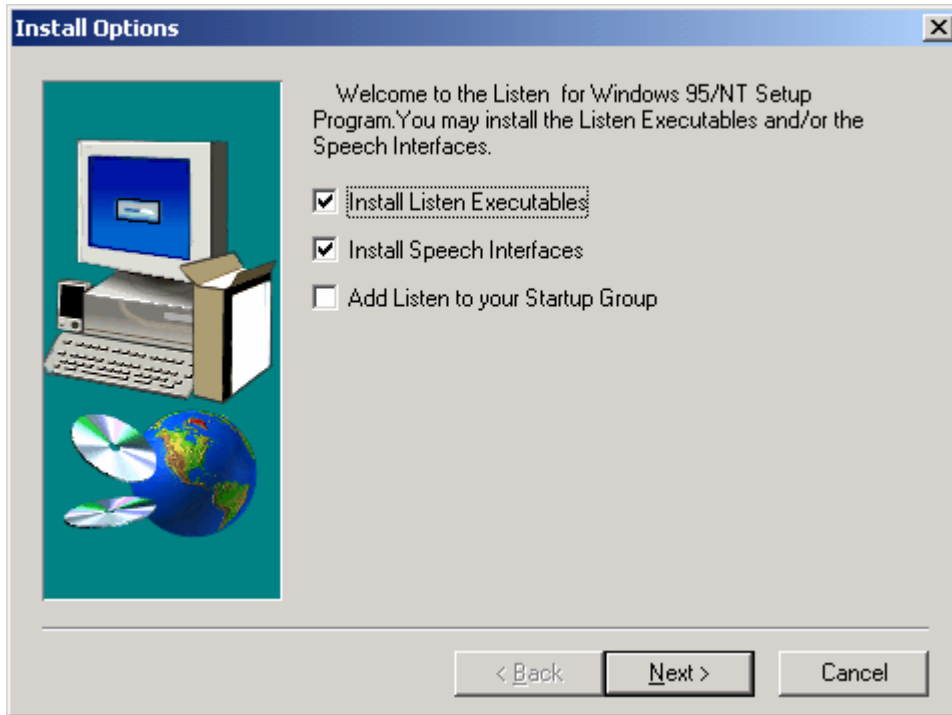
After you type in your HomeVoice™ 2.1 license key, click on the Next> button to continue. You will be presented with the following dialog.



The 'Information' dialog box features an information icon (a lowercase 'i' in a circle) and the text 'Starting the Listen Installation/Upgrade'. An 'OK' button is located at the bottom center.

Click on OK to start the installation of Listen for Windows 4.0. You will be presented with the following dialog.





The installation of listen will install new Speech Interfaces for Microsoft Office 97. If you do not wish to install the new speech interfaces uncheck the section. If you want to add Listen to your startup group select that option. (*We do not recommend adding Listen to your startup, HomeVoice™ will start Listen when required.*)

Depending on the Operating system you may see the following message.

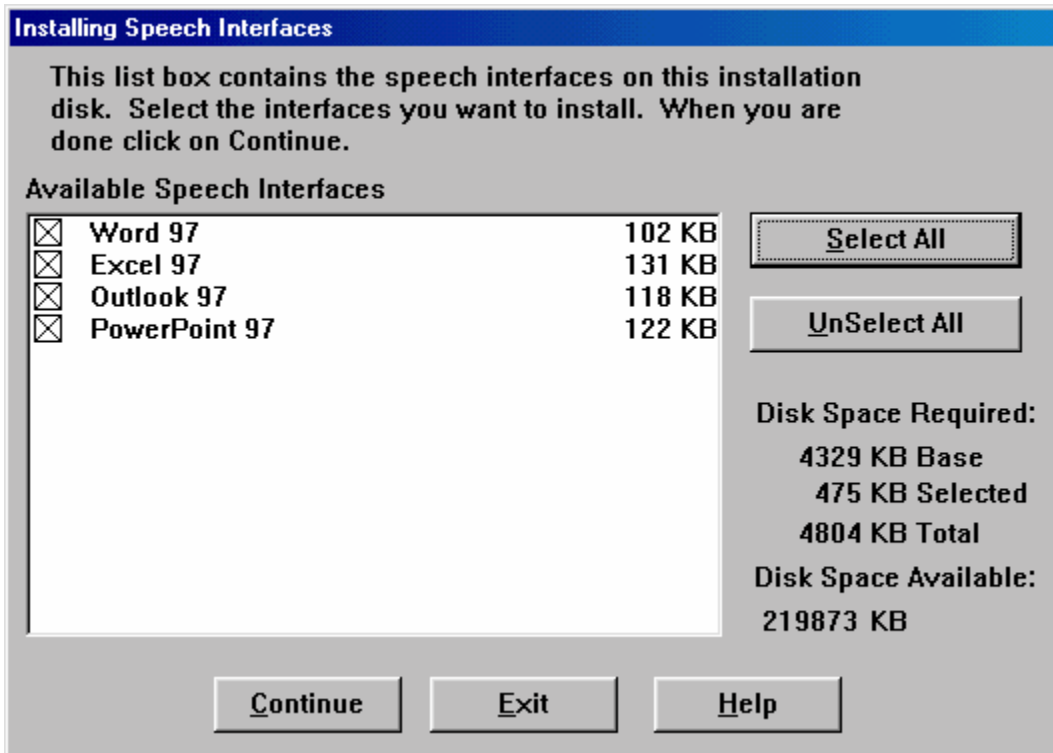
DO NOT CLICK ON OK!! YET!

WAIT FOR THE LISTEN 4.0 INSTALLATION COMPLETION BEFORE CLICKING ON OK. IF YOU DO NOT HOMEVOICE™ 2.3 WILL NOT OPERATE CORRECTLY.

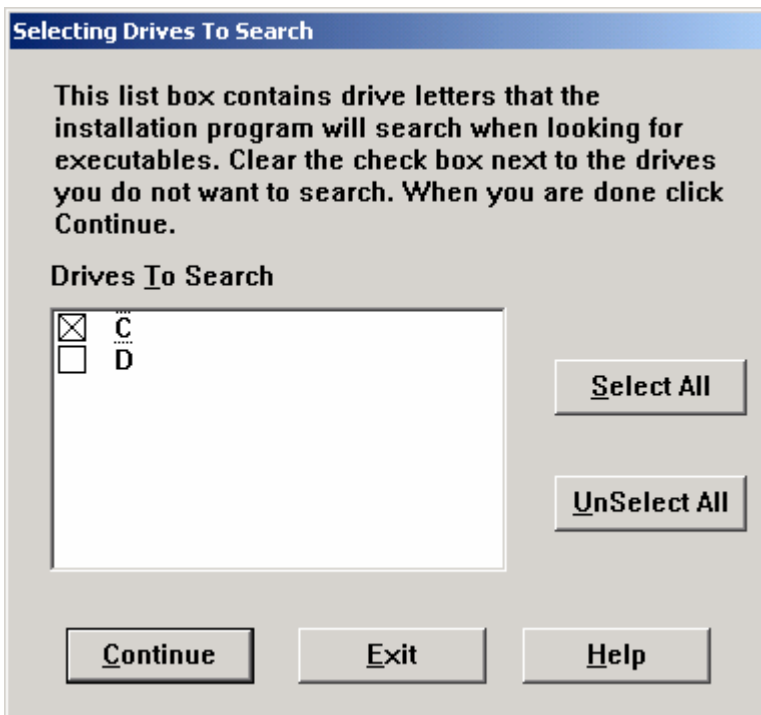


After clicking on Next from the Installation Options Dialog, one of the following two dialogs will be presented. If you selected to install the Speech Interfaces you will see the following dialog. If you chose not to install the speech interfaces you will see the second dialog.

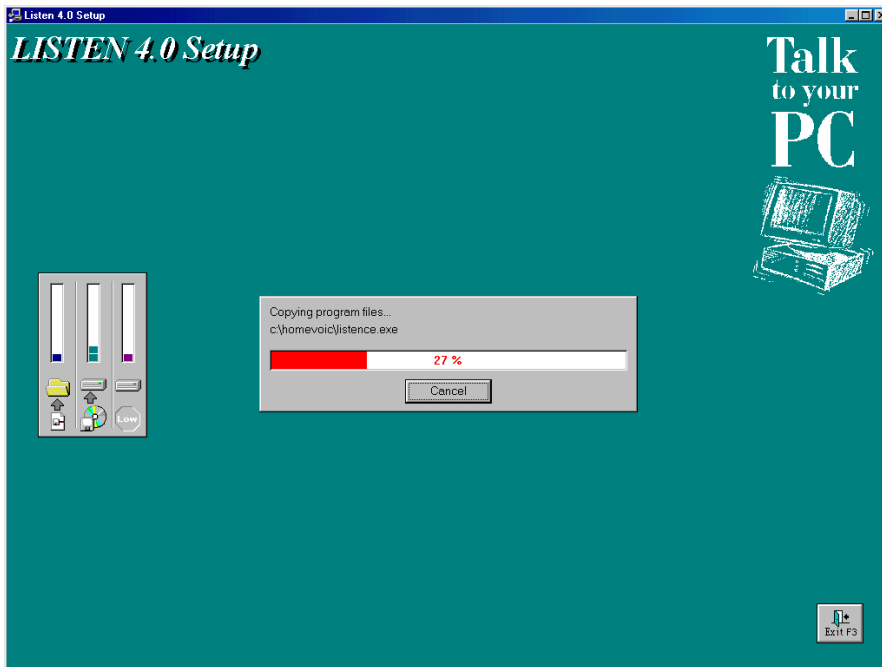




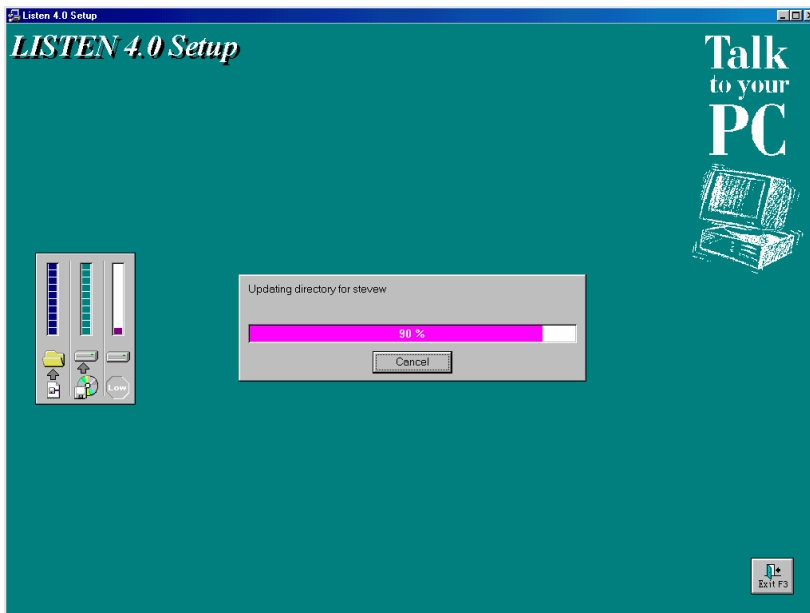
Select the Speech Interfaces you want to install, you must select at least one, and click on Continue. You will see the following dialog:



Listen will search the drives selected for applications to include in the Listen.ini file for activation by voice. Click the Continue button when you have completed you selection. The Installation of Listen 4.0 will begin:



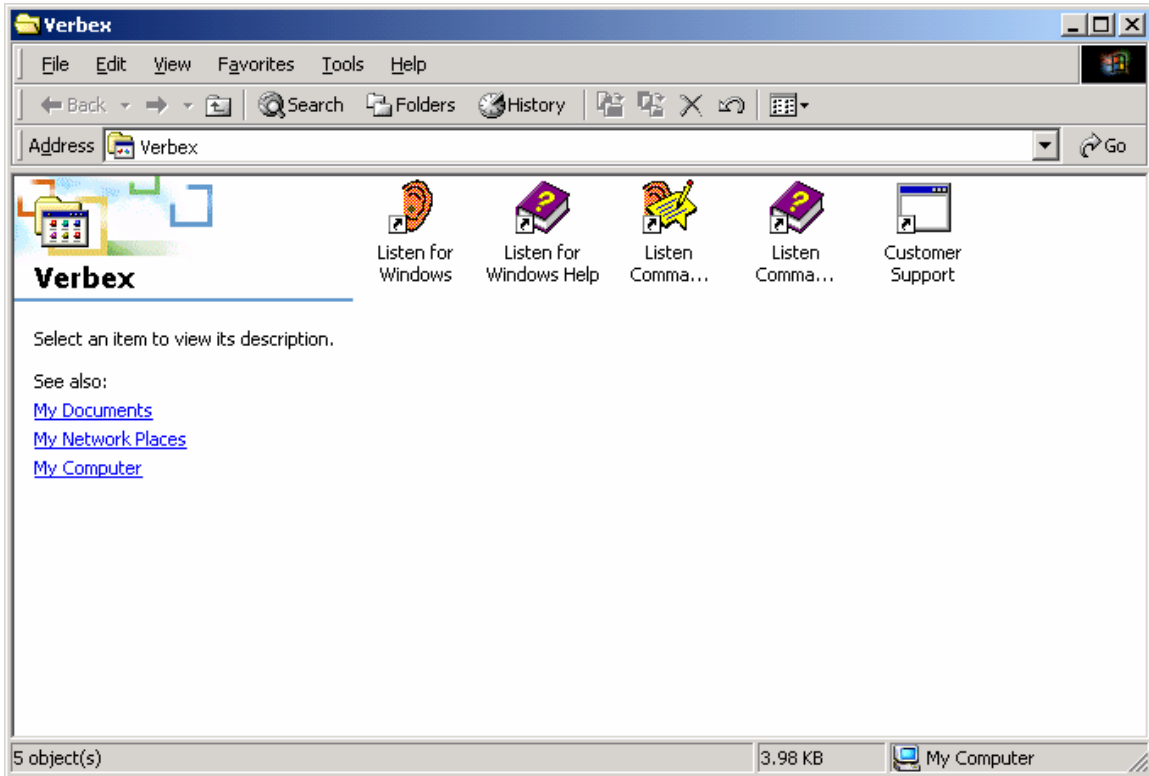
When the files have been installed the user data file will be updated to reflect the changes for Listen 4.0.



When the user files have been updated Listen will create a program group. If the following window does not appear, look on the task bar and find the window.



Close this window before proceeding!!



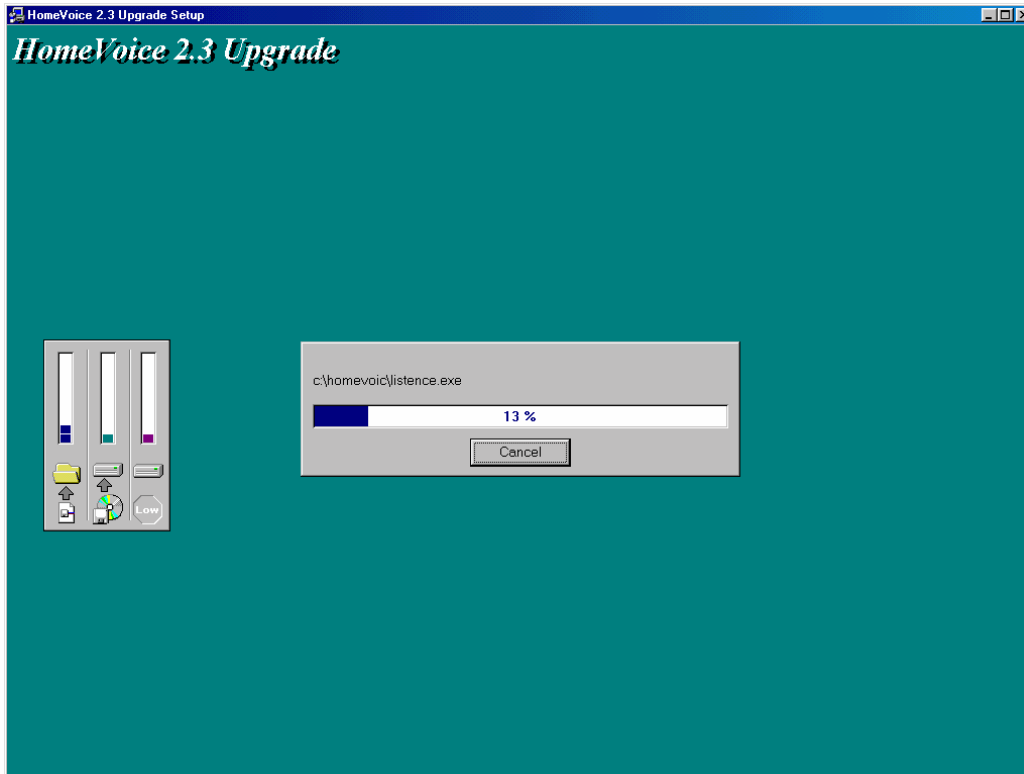
Click on the X in the upper right hand corner or select close from the file menu. You will see the following message.



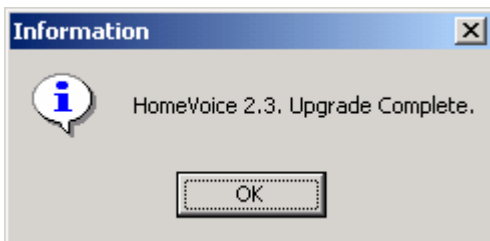
Click on OK to complete the installation of Listen 4.0. You will then see this message.:



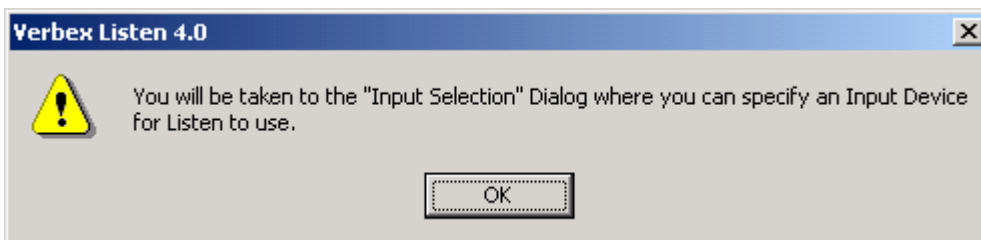
Click on OK to start the upgrade of HomeVoice™. The Following Window will appear and the upgrade to HomeVoice™ 2.3 will start.



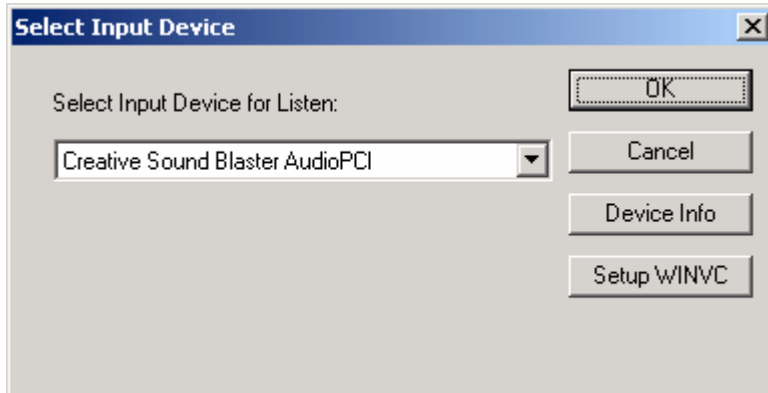
The following dialog will be displayed to show the completion of the HomeVoice™ 2.3 upgrade.



Click on OK to complete the upgrade of HomeVoice™ to version 2.3. Then from the start menu start HomeVoice™ 2.3. You will see the following dialog:



Click on OK to select the correct input device for Listen. The following dialog will be displayed:



Select the correct input device for Listen from the drop down menu and click on OK. HomeVoice™ 2.3 upgrade is complete. We hope you enjoy this version of HomeVoice™. Please send any problems with this version of HomeVoice to support@appliedfuture.com.

